



# ANTAI COLLEGE

## ECONOMICS AND MANAGEMENT

A world-class business school  
firmly rooted in China



Shanghai



Shenzhen



Singapore



1 PART I  
Shanghai Jiao Tong University

5 PART V  
Research

2 PART II  
Antai College

6 PART VI  
Impact

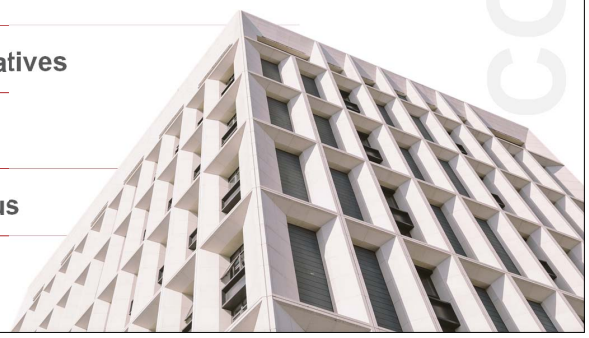
3 PART III  
International Reputation

7 PART VII  
New Initiatives

4 PART IV  
Programs

8 PART VIII  
Contact us

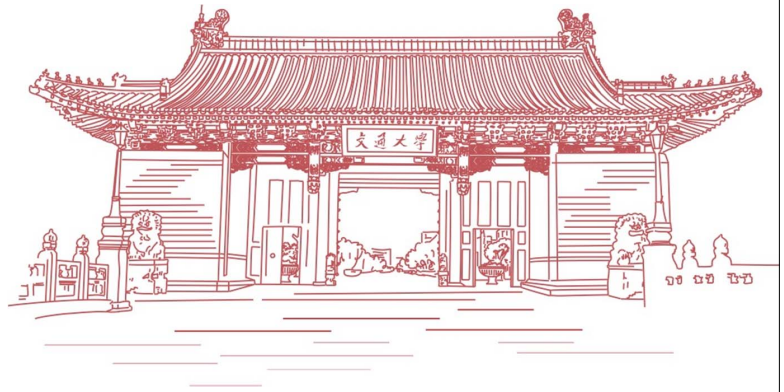
CONTENTS



# Shanghai Jiao Tong University

SJTU

# Part I



*Founded in 1896 with the name Nanyang Public University, Shanghai Jiao Tong University (SJTU) is one of China's oldest and most prestigious institutions of higher learning.*

*With five campuses around the Shanghai area, SJTU has more than 45,000 students and 3,500 full-time faculty members. More than 50 of its faculty are members of the Chinese Academy of Sciences and the Chinese Academy of Engineering.*

*Since our inception our institution has pioneered business education in China. Today, management science is one of SJTU's three top academic fields, along with engineering and medical science.*

# 1896

# Antai College

- History
- Vision & Mission
- Facts & Figures



## Part II

# HISTORY

**ANTAI COLLEGE**  
 ECONOMICS · MANAGEMENT

1896

University Founded

1903

College Launched

2000

Named Antai School of Management because of Aetna's Investment

2011

Triple Crown Accredited  
 First triple-crowned business school in China : AACSB, EQUIS and AMBA

2018

Institute of Industry Research

2022

Shenzhen Institute of Industry Research, SJTU-BOC Institute of Technology

# Mission & Vision



Vision

## 愿景

成为一所扎根中国的  
世界级商学院  
A world-class business school  
firmly rooted in China



Mission

## 使命

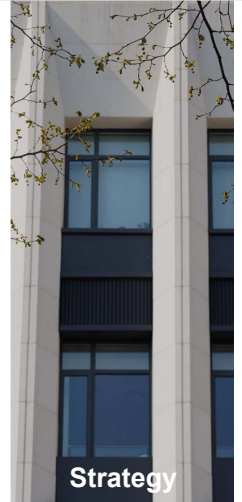
做一等学问  
铸一等人才  
成一等事业  
Do first-class scholarship  
Shape first-class talents  
Enable first-class endeavors



Principle

## 方针

扎根中国管理实践  
推动社会经济发展  
完善经济管理理论  
Be firmly rooted in the  
management practice in China  
Promote social and economic  
development Improve economic  
and management theory



Strategy

## 战略

纵横交错  
知行合一  
Two types of scholarship  
horizontal [academic] and  
vertical [industry], reinforcing  
each other and connecting  
theory with practice



A world-class  
business school  
firmly rooted in China



Alumni

40000+



Department

8



Faculty

183



Students

5400+



Campus

3

Accounting  
Data & Business Intelligence  
Economics  
Finance  
Management Science  
Marketing  
Organizational Management  
Information Technology & Innovation

95% Doctoral degree

Shanghai

Shenzhen

Singapore

# Facts & Figures

# International Reputation

- Rankings, Accreditations & Memberships
- International Partners



## Part III


**QS World University Rankings  
by Subject 2023**

 <b>32<sup>nd</sup></b>	 <b>39<sup>th</sup></b>	 <b>43<sup>th</sup></b>	 <b>56<sup>th</sup></b>
Business & Management Studies	Accounting & Finance	Statistics & Operational Research	Economics & Econometrics


**Financial Times Rankings 2022**

 <b>58<sup>th</sup></b>	 <b>10<sup>th</sup></b>	 <b>18<sup>th</sup></b>	 <b>22<sup>nd</sup></b>
 <b>MBA</b> 安泰经管学院	 <b>EMBA</b> 安泰经管学院	 <b>MIM</b> 安泰经管学院	 <b>EE</b> 安泰经管学院


**Times Higher Education –  
China Subject Ratings, 2022**

 <b>A+</b>	 <b>A+</b>	 <b>A+</b>
Business Administration	Management Science & Engineering	Applied Economics


**中华人民共和国教育部**  
 Ministry of Education of the People's Republic of China

 <b>A+</b>	 <b>A+</b>	 <b>A</b>
Business Administration	Management Science & Engineering	Applied Economics

**Triple Accreditations**



**Memberships**



Rankings Accreditations Memberships

**America 27**

- Columbia University
- Massachusetts Institute of Technology
- University of Chicago
- Yale University
- University of Michigan
- Princeton University
- University of Washington
- University of Southern California

**Africa 1**

- University of Cape Town

**54 Europe**

- University of Cambridge
- University of Oxford
- ESCP Business School
- Universita Bocconi
- Luiss University
- University of Lausanne
- IE University
- University of Mannheim

**20 Asia**

- Waseda University
- Seoul National University
- Nanyang Technological University
- Thammasat University

**5 Oceania**

- University of Sydney
- University of New South Wales



# International Partners

We are connected across the globe.

# PROGRAMS

- Taught in Chinese
- Taught in English
- International Joint Programs



# Part IV



### Taught in Chinese

#### Chinese Degree Programs

- Undergraduate, Master, Ph.D
- MBA, EMBA
- Master of Technology Transfer
- CLGO
- SJTU ASEAN MBA Program

#### Chinese Non-Degree Programs

- Executive Education



### Taught in English

#### International Degree Programs

- IMBA Program
- MIB Program

#### International Non-Degree Programs

- Doing Business in China (ONLINE)
- Antai Global Summer Program (AGSP)
- Antai Global Corporate Lab Program (Lab)



### International Joint Programs

#### Degree Programs

- SJTU-UBC International MBA Program
- SJTU-SMU GPER Program
- SJTU-NTU EMBA Program

PROGRAMS

## IMBA | Shanghai

- Full-English
- 70+ elective courses
- 8 concentrations
- International experience
- Free weekly Chinese mandarin courses



**49**  
Students



**50%**  
International students



**12**  
Nationalities



**30**  
Average age

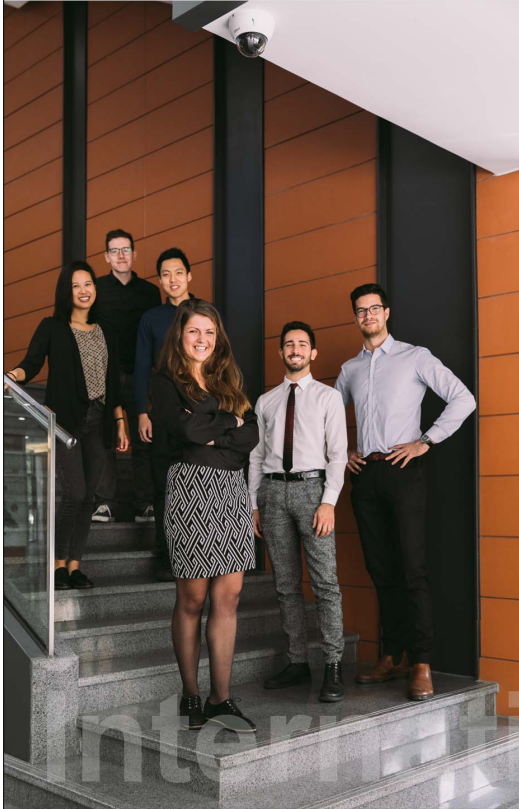


**38%**  
Female



**7**  
Average years of  
work experience

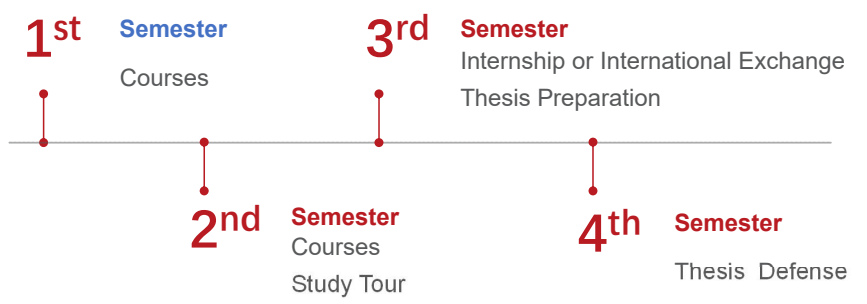
International Programs



# MASTER OF INTERNATIONAL BUSINESS

*A world-class business school firmly rooted in China*

<https://www.acem.sjtu.edu.cn/en/mib/>



## 2-year Program Duration and Credits

- 35 credits of coursework (including 18 credits compulsory courses)
- 10-12 weeks internship or international exchange
- Degree thesis



## Antai Global Summer School

*Antai Global Summer Program (AGSP) was initiated by Antai College of Economics and Management, Shanghai Jiao Tong University in 2013. Taught in English, this 3-week-long, credit-conferring certificate program integrates frontier knowledge of Antai Faculty and insights from corporate executives to offer a comprehensive view of Chinese business and culture in a globally engaging way. AGSP focuses on empowering young business leaders to **understand business and culture in China.***

*So far, AGSP has welcomed more than **400 participants** of both business and non-business majors from **over 30 countries and regions***

International Programs





# ANTAI GLOBAL SUMMER PROGRAM

<https://summerschool.sjtu.edu.cn/>



## UNIVERSITY OF CAMBRIDGE

I studied Asian studies in the UK. Before I came, I knew a lot about Japanese culture and Korean culture, but I felt in order to broaden my horizons and grasp East Asia societies, I really had to come to China and learn about Chinese culture, and see what China is like and how it's different from its neighbors.

— Carl-Fredrik

- Economics & Management Lectures
- Exclusive Company Visits
- 中華 Chinese Language & Culture
- Diverse Student Mix
- 1 Certificate 3 Credits
- Scholarships

10 Years 30+ Nationalities 400+ Participants

JULY 10-28, 2023  
SHANGHAI

+86-21-6293 3262  
AGSP@sjtu.edu.cn

Application Deadline: May 31, 2023

Info. Session: May 19, scan the QR Code to sign up



China In-depth  
Globally Relevant  
Strategically Engaged

CHINA BUSINESS  
UP CLOSE

# DOING BUSINESS IN CHINA

<https://online.acem.sjtu.edu.cn/DBIC>

# RESEARCH

- Antai Academic Profile of the most recent year
- Research Centers & Think Tanks
- Journals
- Publications



## Part V

# ACADEMIC PROFILE

of the most recent year

198

SSCI/SCI  
Peer-reviewed  
Journals

101

Antai-defined  
High-quality Papers

34

International  
Case Studies

411

Publication  
in Newspaper

50

Books and  
Monographs

# Research Centers

# & Think Tanks

## 6 International Research Centers



- 2017 ACEM-NHH Norwegian School of Economics Research Center
- 2016 ACEM-Michigan Ross Research Center
- 2016 ACEM-Carlson School of Business Research Center
- 2016 ACEM-Copenhagen Business School Research Center
- 2014 SJTU-SMU Center for Quantitative Economics and Finance
- 2005 Sino-US Global Logistics Institute

## 3 National Think Tanks



- The Research Institute of China Development
- The Research Institute of Chinese Enterprise Development
- Institute of Industry Research



## Industry Research Outcomes since 2018

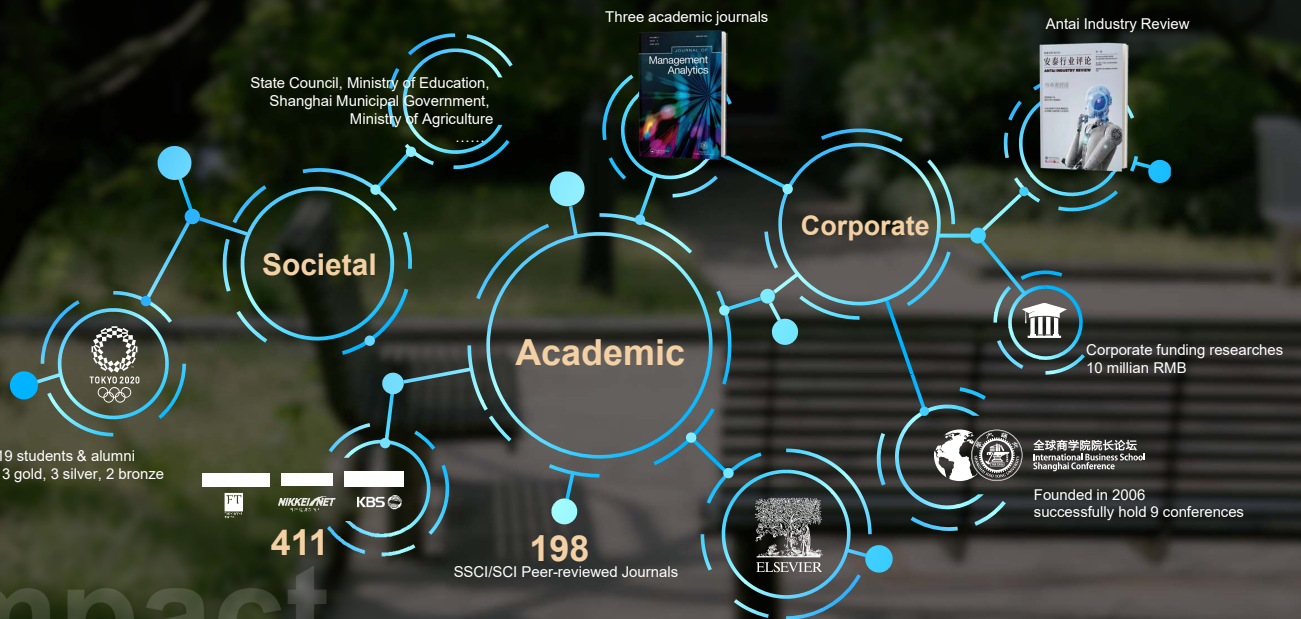


# Impact

- Academic
- Corporate
- Societal



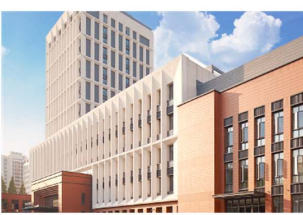
## Part VI



# Impact

# NEW INITIATIVES

## Part VII



**Institute of Industry Research (IIR), SJTU**

- Launched in December 2018
- 32 industry research teams to date
- Implementing industry research strategy



**Shenzhen Institute of Industry Research (SIIR), SJTU**

- Launched in August 2022
- Promote technology and science development and boost economic transformation



**SJTU-BOC Institute of Technology & Finance**

- Launched in February 2022
- Collaboration between SJTU and Bank of China (BOC)
- Tech-finance institute, first Master in Technology Transfer in China

# CONTACT US



上海交通大学  
SHANGHAI JIAO TONG UNIVERSITY



安泰经管学院  
ANTAI COLLEGE  
Economics · Management

A world-class business school  
firmly rooted in China

## Headquarter – Shanghai International Office

✉ tracy01@sjtu.edu.cn

☎ 86-21-5230 2510

📍 1954 Huashan Road, Shanghai, 200030, China PRC

## Antai Asia-Pacific Center – Singapore

✉ asean.mba@sjtu.edu.cn

☎ 65- 6601 4039

📍 1 Create Way, CREATE Tower, #14-01, Singapore 138602

<https://www.acem.sjtu.edu.cn/en/>



Shanghai | Shenzhen | Singapore