
Academic mobility programmes

Fall 2025-2026 academic year

International Office
Graduate School of Business



TABLE OF CONTENTS

1.

How to participate in the mobility program

Mobility types, requirements, accepting applications

2.

Fall'25 partners

List of partnering universities that accept GSB students in the upcoming spring

3.

Choosing university

How to choose a university, specific requirements

4.

Filling in the application

Documents and the application steps

5.

Q&A

Answering your questions



1

**MOBILITY
PROGRAMMES**

PARTNER AGREEMENTS

- **International office:** selects and nominates students, prepares the mobility documents at GSB, communicates with a host university if needed.
- Students **don't pay** tuition at the **partner university**
- Students can apply for **GSB scholarship**

FREEMOVING STUDENTS

- Students **themselves contact** the university of their interest, apply for exchange studies, send the **acceptance letter** to our office along with the other documents for mobility
- Students are **required to pay tuition** at the host university
- Learn more at <https://gsb.hse.ru/en/iec/news/552089023.html>

SELECTION CRITERIA & REQUIREMENTS

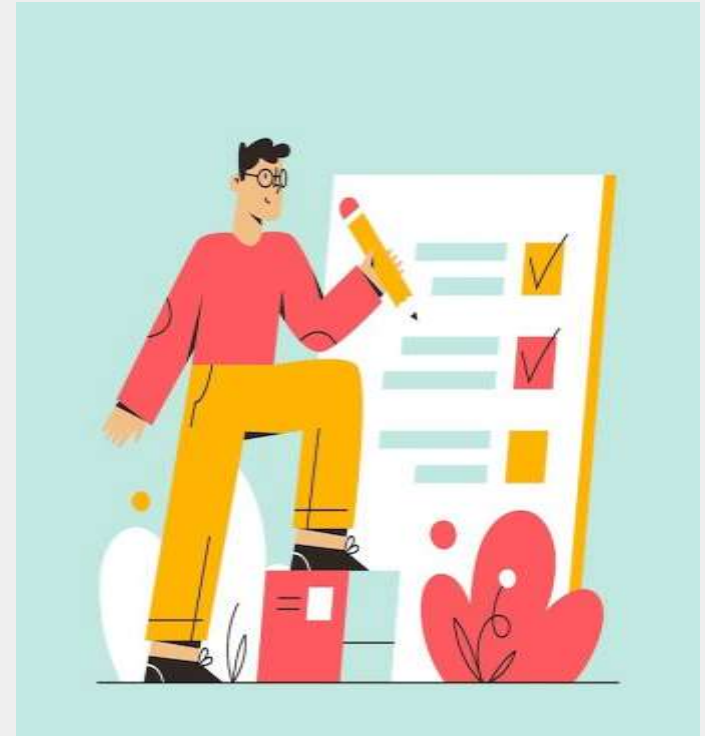
- No academic debts
- Good academic performance
- Minimum **B2** of **English** proficiency
- Students who are currently on **academic leave can't participate** in the selection process

Undergraduate:

Spend at least **1 academic year** at GSB

Graduate:

- Get an approval from the academic director
- Organise internship, complete the courses at HSE, get approval for additional subjects to be included in the individual study plan
- Be ready to postpone the defense and graduation



SELECTION PROCESS

February 3d – February 26th
Main intake

February 3d – April 20th (3 waves)
HSE exchange programmes (university agreements)
<https://studyabroad.hse.ru/en/>



2

PARTNERS

FALL

15 foreign GSB partners are ready to
welcome our students



GSB PARTNERS



15 partners

<https://gsb.hse.ru/en/iec/catalogue/>



11 countries

Austria, China, France, Germany,
Hungary, India, Indonesia, Morocco,
Mexico, Singapore, Turkey



37 spots

For GSB students only
(Fall 2025-26)

GSB PARTNERS



ESB & HHL (Germany), IPAG (France)



3

CHOOSING UNIVERSITY

Choosing university, requirements, spots



UNIVERSITY CARD



Choose university here

UNIVERSITY CARD



Educational (study) fields

Educational level

Number of spots available

Language proficiency requirements

University feedback from students
gsb.hse.ru/iec/map

UNIVERSITY CARD

What is important to know?

[Academic Calendar](#)

[Courses](#)

Restrictions in course selection: see Factsheet

Administrative Fees:

[Accommodation](#)

Health Insurance: insurance must cover the entire period of stay

 [Factsheet](#)

 [Guide for international students](#)

Exchange students support


[Calculate living costs in Erlangen](#)

Lecture, exam periods

Courses delivered in English

General info for exchange students

MATRIX

Universities recommended for your educational programme:  [matrix](#)

 [Academic calendar of partner universities](#)

 [Presentation, "Academic mobility program", GSB, Spring 2024-2025](#)

Universities
recommended for your
educational programme

Algorithm for preparing a Preliminary Study Plan

Step 1.

Open your programme curriculum (see links to course curricula at the bottom of this page)

Step 2.

Select the year of enrolment at HSE University and open the course curriculum for the time period when you plan to be on exchange.

Step 3.

Preliminary Study Plan

gsb.hse.ru/iec/studyplan

4

APPLICATION FORM

Step-by-step guide



APPLICATION FORM



Step by step guide with links
and examples

Apply to those universities only you
are ready to study

APPLICATION FORM

1

Choose a study programme (university)

- You can choose up to 3 top-priority university in accordance with your budget and courses offered
- Take a look at the statistics of past selections and check the minimum GPA to universities of your interest

2

Plan your budget

- Tuition fees at partner universities are waived, **BUT** all the other expenses are covered by students (visa, insurance, tickets, accomodation, service fees)
- Read Factsheets of the partner universities and visit [Numbeo](#) website, check real accommodation prices
- Include the unexpected expenses in monthly budget

* Students without scholarships continue to pay for studies at HSE

APPLICATION FORM

3

Prepare a package of documents

- Create an individual **.pdf** file for each chosen university
- If you have **3 priorities**, submit **3 document packages**, but **1 application form**

4

Submit an application

- All documents must be in **.pdf** format:
<https://www.hse.ru/polls/1008400315.html>
- Applications to the HSE level partners are submitted **separately** studyabroad.hse.ru/





RESULTS

You will receive an email to the @edu.hse.ru address with the selection results within **3-4 weeks** after the deadline

You will have **1-2 days** to confirm your intention to participate in the exchange programme

Carefully study the **application periods** at the nomination universities. Webinar for selected students will be organised later.

Learn more: https://gsb.hse.ru/en/tec/before_out

DOCUMENTS PACKAGE



DOCUMENTS PACKAGE 1/3



Request for Exchange Programme

- Signed by student, programme manager and academic director
- Must be emailed to the study office at least 10 days before the application deadline
- Confirmation that there are no academic debts (failed classes)



Proof of English Proficiency

- Official Language Certificate;
- HSE Independent English Exam certificate
- Extracts from online grade books for BA students who have taken HSE Exam after the 1st year of studies;
- Certificate of attendance for MA students who study fully or partially in English;
- ["Linguotest"](#) results

DOCUMENTS PACKAGE 2/3



Letter of motivation

- Prepared for each university
- Must be in English, appx. of 500 words
- Motivational letter writing [workshop](#)



Recommendation Letter

- For each university (preferably), but one general is also accepted
- Written by your HSE professor, academic supervisor or programme head
- Letters from English teachers are not accepted
- Must be in English
- No strict rules, follow the general guidelines for reference letters

DOCUMENTS PACKAGE 3/3



CV

- Must be in English
- In your own format



Estimate of expenses

- Factsheet of a partner university and Numbeo website
- [Estimate of expenses template](#)

PRELIMINARY STUDY PLAN

Algorithm for preparing a Preliminary Study Plan

Step 1.

Open your programme curriculum (see links to course curricula at the bottom of this page)

Step 2.

Select the year of enrolment at HSE University and open the course curriculum for the time period when you plan to be on exchange.

Step 3.

Algorithm for preparing a Preliminary Study Plan, links and examples

gsb.hse.ru/iec/studyplan

Curricula for students enrolled in 2022

Year of enrolment: 2023 **2022**

Curricula by programme

gsb.hse.ru/iec/studyplan

Curriculum 1 year of studies 2 year of studies



270,000

The maximum amount of scholarship that can be awarded to a GSB student to study at the partner university



GSB SCHOLARSHIP

Students who would like to apply for a scholarship must:

- submit the documents along with the mobility application
- apply for an exchange programme under faculty agreements and be nominated to the GSB Partner University
- demonstrate high academic performance (current and cumulative grade ≥ 7.5)
- have academic achievements and/or take an active part in the faculty life

Learn more: <https://gsb.hse.ru/en/iec/scholarship>

270.000p

**China (Hong Kong),
Singapore, Mexico**

250.000p

**Austria, Germany, France, India,
Indonesia, Morocco**

220.000p

Hungary, China, Turkey

INTERNATIONAL OFFICE CONTACTS



Olga Rodina

Head of project

+7 (495) 772-95-90 *27916



Olga Spiridonova

Manager of International office

+7 (495) 772-95-90 *28503

outgoing.gsb@hse.ru

<https://gsb.hse.ru/>



gsb_international



@hsegsbinternational6168



4

YOUR QUESTIONS
